



Naturalia 
Recreating nature

Arpa 




Naturalialia 

Recreating nature



EXPERIENCE NATURE



Naturalia takes the shapes, colours and textures of nature - wheatfields, dunes, woods, bark and stone - and transforms them into an environmentally sustainable design medium with a feel that can become a way of life, a style and an outlook on life.

The R&D team at Arpa has redrawn the boundaries between man and nature and come up with a revolutionary material that combines functional innovation, technology and beauty. Naturalia is made of wood fibres, from certified European forests to give warm, solid wooden surfaces made from renewable resources. Naturalia is extremely versatile and easy to work and brings a breath of fresh air to the world of interior design, offering new ideas for the design of furnishing schemes that are always elegant and appropriate for every situation.

Glass table base
in Naturalia N04
Erre finish

An eco-friendly material

Naturalia is an environment-friendly material coming from sustainable resources. It is made of wood fibres from certified European forests. The fibres are impregnated and blended with thermosetting resins and pressed at high temperature. This results in a homogeneous, non-porous, high-density panel with high performances. Naturalia can be recycled at the end of its life cycle.

ECOLOGY AND DESIGN

Right:
Worktop in Naturalia N02
Larix finish

Below:
Kitchen Worktop in Naturalia
N01
Naked finish

Inspiring surfaces

The elegant, sophisticated surfaces of Naturalia bring to mind - and your fingertips - the thrill of contact with nature: the slightly rough bark of a tree under the palm of your hand, fine sand trickling between your fingers or the warmth of soft earth... Beauty arouses strong feelings. The standard finish, ERRE, has a delicate texture that is compact, smooth and pleasant to the touch. The long, closely packed veins of GHIBLI evoke the tall conifers of North America. The highly structured finish of LARIX is rough to the touch while NAKED is bare and clean as a debarked tree, solid, familiar and reassuring.







cture materials hormigón cemento betão

The taste of nature

Each colour in the Naturalia range - Grano, Duna, Lichene, Marna, Castagna and Ossidiana - will give interiors a different feeling. These six elements evoke six different worlds and six colour emotions, but also six soft, natural and comfortable environments bringing peace and warmth. They are beautiful to both the eye and the soul; a pleasure to live with.

The colours of Naturalia go right through the material and the wood fibre core combined with resin and natural pigments defines the appearance of Naturalia. The overall colours come from these organic pigments, while the tonal variations, shades, feel and texture of the surfaces are all due to the solidity and random arrangement of the fibres themselves, creating a sophisticated décor style.

Versatile and easy to work

Every designer will appreciate the natural appearance of Naturalia whose unique characteristics combine excellent working properties with beauty. The solidity, homogeneity and durability of Naturalia offer interior designers an entirely new concept. The coloured core of Naturalia can be worked easily with a range of woodworking tools and can be cut to many shapes or angles, providing the versatility and workability needed for the free expression of ideas.

Left:
living area
in Naturalia N01
Erre finish

Below:
vertical application
in Naturalia N01
Maastricht finish
(by special order)

TIMBER AND STYLE



Multiple applications

Naturalia is perfect for worktops in many situations - counters, furniture or supporting surfaces - and is particularly suitable for kitchen work surfaces thanks to its scratch-resistant and water-repellent properties. Its high load capacity allows designers to use long spans with a limited number of intermediate supports. Vertical applications are also possible. The density and uniformity of the structure of Naturalia means that it can be cut in any direction giving obvious savings. It can also be milled and routed and is easy to machine.



Above: bathroom fitting
in Naturalia N00
Naked finish

Right: living room table
in Naturalia N05
Larix finish

A MATERIAL FOR IDEAS

Freedom to invent

Highly uniform, very solid, self-supporting and water-resistant, with high density and good load capacity, Naturalia offers creative people great design freedom. They can create structures that fit perfectly into any living or working environment and give any room a mellow, comfortable atmosphere. Naturalia is a combination of research, technology, design skill and great attention to the

environment we live in and want to preserve. It is a material that offers architects and designers the freedom to invent, design and create interiors that reflect the true feeling of nature.





Below: Decorative element
in Naturalia N05
Larix finish



Scratch and wear-resistant



The uniform, through colour of Naturalia and its solidity make it highly resistant to service scratches, so marks are almost invisible. Naturalia's high impact resistance and mechanical performance, combined with this scratch and wear resistance, make it suitable for horizontal applications.

Heat-resistant



Naturalia's surface is resistant to high temperatures making it particularly suitable for kitchen worktops.

Easy to clean and hygienic



Naturalia is easily cleaned with soap and warm water, as well as most common household detergents. Abrasive sponges or powders that might damage the surface are not recommended.

Suitable for contact with food



Naturalia's surface does not encourage the growth of micro-organisms and is suitable for prolonged contact with foodstuffs. It is non-porous and impermeable to water. These properties make Naturalia an ideal material for the kitchen environment.

Natural colours



The colour through core of Naturalia is the result of the combination of natural wood fibres and resins used in the manufacturing process and pigmented with natural colours. The inherent variation in the colour of the wood fibres is reflected in the variation of the final product from sheet to sheet, which allows the designer to create a natural and warm environment.

Self-supporting



On vertical surfaces, Naturalia can be self supporting, with the correct stud spacing. Moreover, it has also a high load bearing ability which enables a lot of attractive horizontal applications. This means great creative freedom for designers and architects, both for decorative and structural features.

Environmentally sustainable



Naturalia is made from renewable resources. The wood fibres used to produce Naturalia are issued from certified European forests and comply with the PEFC requirements. The Programme for Endorsement of Forest Certification (PEFC) is the assurance that wood used in the application comes from sustainably managed forests. Naturalia can also be recycled at the end of its life cycle.

TECHNICAL INFORMATION

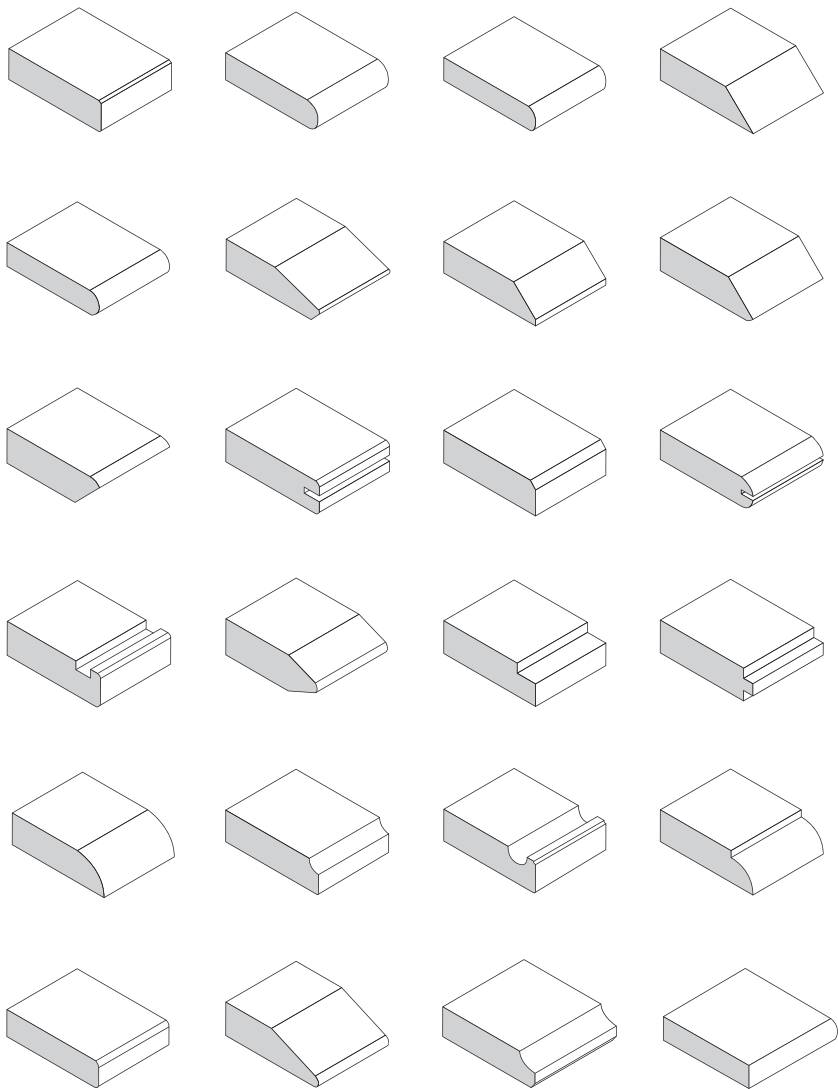
Standard panel types are manufactured in accordance with EN 438:2005 and over 6.4 mm are classified D-S2,d0. Naturalia behaves like solid wood and is suitable for milling and routing. Naturalia is classified E1 in Formaldehyde emission tests. For more information, please refer to the properties table on page 16.

Composition

Naturalia is made of wood fibres blended with thermosetting resins and manufactured under high pressure and at high temperatures. The fibres are randomly arranged, giving it a pleasant appearance and texture. The manufacturing process ensures a homogeneous, non-porous material.

Format

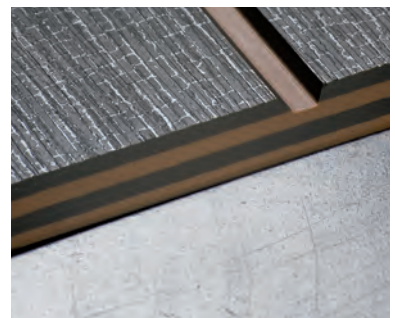
Naturalia panels are available in a standard size of 3,050 x 1,300mm.



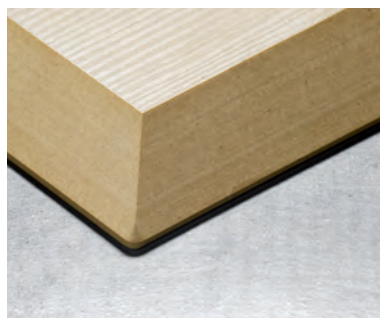
Machining

Due to its multidirectional fibre structure, Naturalia can be cut in any direction with obvious advantages both in terms of cost and freedom of design expression. Naturalia is easy to machine using traditional woodworking (e.g. carbide or diamond) tools and can be milled and routed.

-
- 01 Multicolour N04/N01 with routing
 - 02 N05 with 45° routing
 - 03 N00 with rounded milling
 - 04 N01 milling with double rounded edges
 - 05 N02 routed (detail of ready-to-assemble chair)
 - 06 N03 routed unit



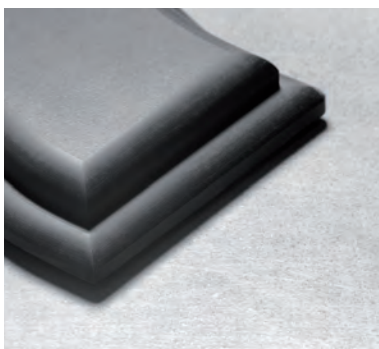
01



02



03



04



05



06

TECHNICAL INFORMATION

Properties	Method	Results
Classification	EN 438-4:4	Standard CGS
Thickness		6,4 – 9,7 - 12,8 mm
Thickness tolerances	EN 438-4:6	$5,0 \leq t < 8,0: \pm 0,40$ $8,0 \leq t < 12,0: \pm 0,50$ $12,0 \leq t < 16,0: \pm 0,60$
Length and width	EN 438-4:6	+ 10 mm/ - 0 mm
Flatness (measured on full-size sheet)	EN 438-4:6	$6 \leq t \leq 10 \text{ mm}: \leq 5 \text{ mm/m}$ $10 \leq t : \leq 3 \text{ mm/m}$
Squareness	EN 438-4:6	$\leq 1,5 \text{ mm/m}$
Straightness of edges	EN 438-4:6	$\leq 1,5 \text{ mm/m}$
Surface quality: · Spots, dirt and similar surface defects · Fibres, hairs and scratches	EN 438-4:6	$\leq 1 \text{ mm}^2/\text{m}^2$ $\leq 10 \text{ mm}^2/\text{m}^2$
Density	EN ISO 1183-1	$\geq 1,35 \text{ g/cm}^3$
Flexural modulus	EN ISO 178	$\geq 9000 \text{ Mpa}$
Flexural strength	EN ISO 178	$\geq 80 \text{ Mpa}$
Tensile strength	EN ISO 527- 2	$\geq 70 \text{ Mpa}$
Dimensional stability at elevated temperatures: · Longitudinal dimensional change · Transverse dimensional change	EN 438-2:17	$\leq 0,30 \%$ $\leq 0,60 \%$
Resistance to impact with large diameter ball Drop height 1800 mm – Mass of steel ball 370 g · Diameter of indentation	EN 438-2:21	$\leq 10 \text{ mm. diameter}$
Resistance to immersion in boiling water for 2 hours · Mass increase · Thickness increase · Appearance	EN 438-2:12	$\leq 2 \%$ $\leq 2 \%$ Rating ≥ 4
Resistance to dry heat (180°C): · Appearance	EN 438-2:16	Rating ≥ 4
Resistance to wet heat (100°): · Appearance	EN 12721	Rating ≥ 4
Resistance to water vapour · Appearance	EN 438-2:14	Rating ≥ 4
Resistance to cigarette burns · Appearance	EN 438-2:30	Rating 4
Resistance to scratching	EN 438-2:25	Rating 3
Resistance to cracking · Appearance	EN 438-2:24	Rating ≥ 4
Lightfastness (xenon arc) · Contrast	EN 438-2:27	Rating ≥ 4 Grey scale
Resistance to staining · Group 1 – 2 · Group 3	EN 438-2:26	Rating 5 Rating 4
Evaluation of the action of micro-organisms Methods A + C (bacteria and mould)	EN ISO 846	Biostatic
Contact with foodstuffs	EN 1186:2003	Suitable
Reaction to fire	EN 13501-1 / EN 438-7	Euroclass D-s2,d0
Formaldehyde emission	EN 717 - 1/2	Class E1

All data given refers to the standard versions of Naturalia products. Arpa Lab is available for any additional information required.

DELIVERY PROGRAMME

Colour Code	Colour Name	Standard finishes	Finishes available to order	Panel size	Standard thicknesses	Thicknesses to order
N00	Castagna	Erre, Ghibli, Larix, Naked	Martellata and Top Face on both sides of the panel; Satinata, Quarzo, Poro, Carré, Diamante, Cliff, Wood and Maastricht on one side of the panel with Erre finish on the other	3,050x1,300	6.4 9.7 12.8mm	da 16 a 32mm
N01	Ossidiana	Erre, Ghibli, Larix, Naked	Martellata and Top Face on both sides of the panel; Satinata, Quarzo, Poro, Carré, Diamante, Cliff, Wood and Maastricht on one side of the panel with Erre finish on the other	3,050x1,300	6.4 9.7 12.8mm	da 16 a 32mm
N02	Lichene	Erre, Ghibli, Larix, Naked	Martellata and Top Face on both sides of the panel; Satinata, Quarzo, Poro, Carré, Diamante, Cliff, Wood and Maastricht on one side of the panel with Erre finish on the other	3,050x1,300	6.4 9.7 12.8mm	da 16 a 32mm
N03	Marna	Erre, Ghibli, Larix, Naked	Martellata and Top Face on both sides of the panel; Satinata, Quarzo, Poro, Carré, Diamante, Cliff, Wood and Maastricht on one side of the panel with Erre finish on the other	3,050x1,300	6.4 9.7 12.8mm	da 16 a 32mm
N04	Duna	Erre, Ghibli, Larix, Naked	Martellata and Top Face on both sides of the panel; Satinata, Quarzo, Poro, Carré, Diamante, Cliff, Wood and Maastricht on one side of the panel with Erre finish on the other	3,050x1,300	6.4 9.7 12.8mm	da 16 a 32mm
N05	Grano	Erre, Ghibli, Larix, Naked	Martellata and Top Face on both sides of the panel; Satinata, Quarzo, Poro, Carré, Diamante, Cliff, Wood and Maastricht on one side of the panel with Erre finish on the other	3,050x1,300	6.4 9.7 12.8mm	da 16 a 32mm

Defining Naturalia

Description: environmentally sustainable (obtained from renewable resources), through-coloured, high density material, consisting of wood fibre, thermosetting resins and natural organic pigments. Complies with EN standard 438-2005.

Colour Code:

Colour Name:

Name of Surface finish:

Size of standard panel:
3,050 x 1,300 mm

Panel thickness:

Thicknesses

Naturalia is available in three standard thicknesses: 6.4, 9.7 and 12.8 mm. Special thicknesses between 16 and 32 mm can be supplied on request. Please contact us for more information.

Finishes

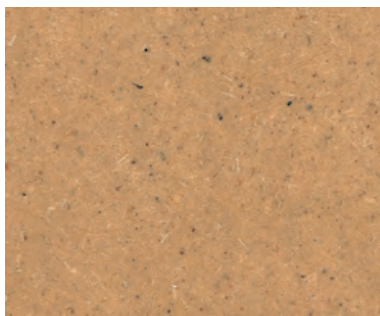
The standard finishes are: Erre, Ghibli, Larix and Naked. The following finishes can be made on request: Martellata and Top Face on both sides; Satinata, Quarzo, Poro, Carré, Diamante, Cliff, Wood and Maastricht one side (the other side in Erre finish).

Erre

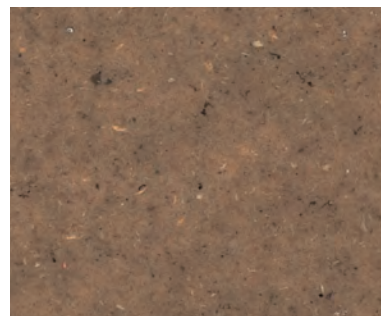
Erre is the standard finish. It feels smooth to the touch, soft, delicate and very comfortable to use.



N04 Duna



N05 Grano



N00 Castagna

Ghibli

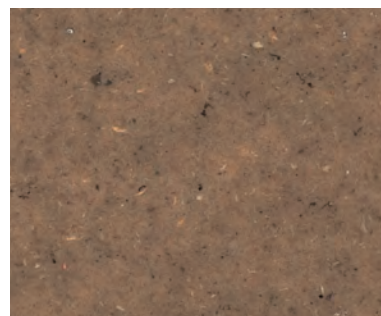
The Ghibli finish provides a slightly rough texture whose very fine lines show up under the play of light.



N04 Duna



N05 Grano



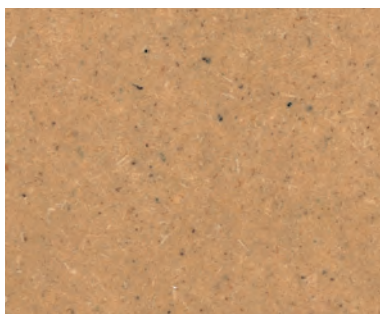
N00 Castagna

Larix

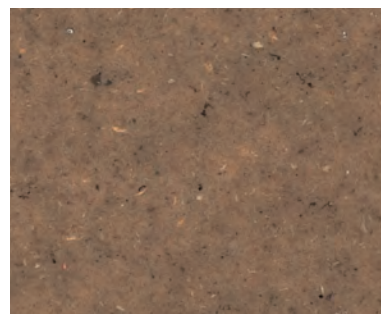
The Larix finish has a texture of broad, irregular striations that is ideal for creating sophisticated interiors and compatible with every style of furnishing.



N04 Duna



N05 Grano



N00 Castagna

Naked

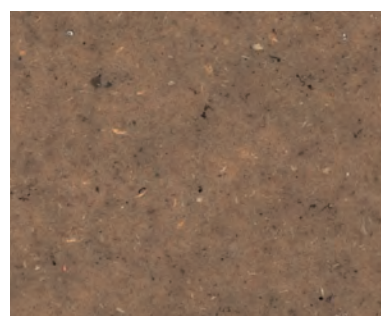
The Naked finish offers a rugged texture reminiscent of tree bark and exudes the ambience of a natural environment.



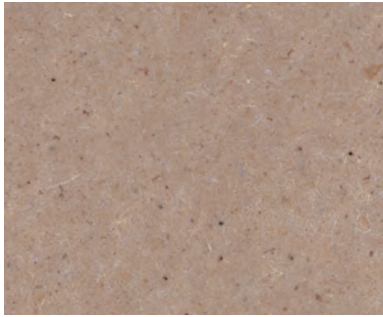
N04 Duna



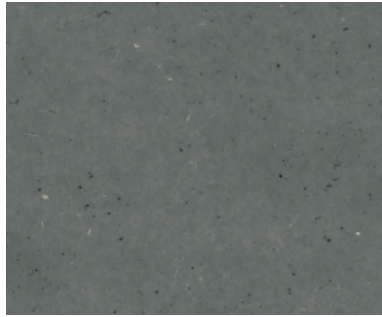
N05 Grano



N00 Castagna



N03 Marna



N02 Lichene



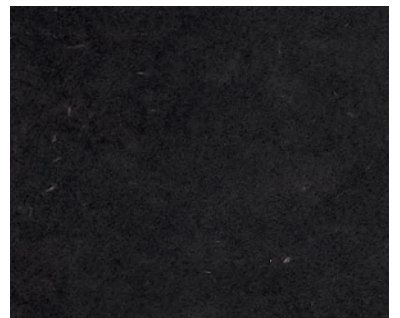
N01 Ossidiana



N03 Marna



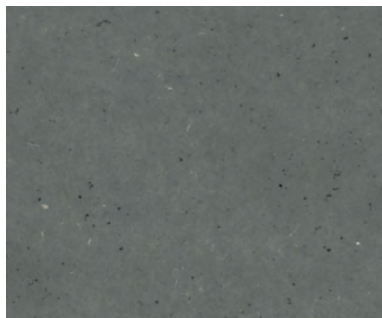
N02 Lichene



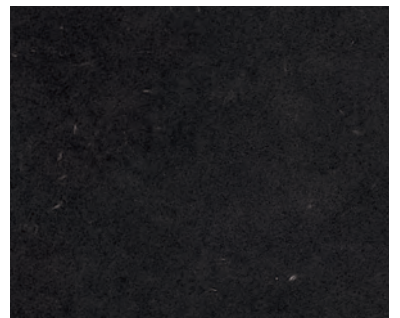
N01 Ossidiana



N03 Marna



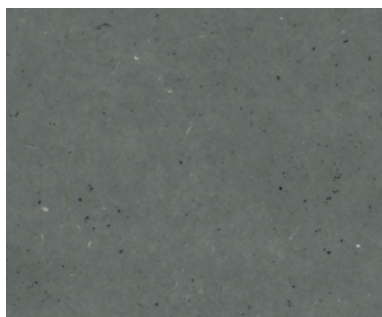
N02 Lichene



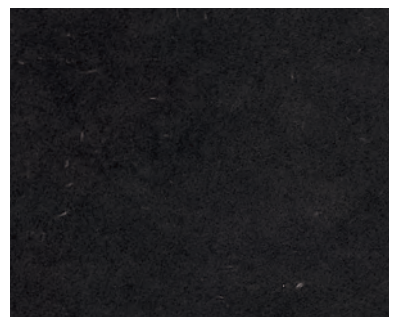
N01 Ossidiana



N03 Marna



N02 Lichene



N01 Ossidiana

Naturalia by Arpa samples and panels are manufactured according to relevant specific tolerances. Samples and panels are not drawn from the same production batch. The appearance of colours is naturally affected by slight variations in the pigmentation used, as well as the viewing position and the finish chosen.

HEADQUARTER - Italy

ARPA INDUSTRIALE S.p.A.
Via Piumati, 91
12042 Bra (CN) - Italy
Tel. +39 0172 436111
Fax +39 0172 431151
E-mail: arpa@arpaindustriale.com
Website: www.arpaindustriale.com

BRANCHES - Italy

ARPA Lissone
Via B. Cellini 29
20035 LISSONE (MI) - Italy
Tel. +39 039 795525
Fax +39 039 2782484
E-mail: lissone@arpaindustriale.com

ARPA Padova
Via Tamburin 25
35010 LIMENA (PD) - Italy
Tel. +39 049 8848105
Fax +39 049 8848004
E-mail: padova@arpaindustriale.com

ARPA Pesaro
Via dell'Industria 8/10
Loc. Chiusa di Ginestreto
61100 PESARO (PU) - Italy
Tel. +39 0721 482295 / 482012
Fax +39 0721 482292
E-mail: pesaro@arpaindustriale.com

BRANCHES - Europe

ARPA FRANCE S.A.R.L.
50, Impasse de la Balme
69805 SAINT PRIEST –
CEDEX - France
Tel. +33 (0)4 78 90 00 23
Fax +33 (0)4 78 90 64 66
E-mail: arpafrance@wanadoo.fr

ARPA UK Ltd
Block 3, Park Hall Business Village
Park Hall Road, Longton
STOKE-ON-TRENT ST3 5XA
United Kingdom
Tel. +44 (0)1782 332 368
Fax +44 (0)1782 331876
E-mail: arpauk@arpaindustriale.com

ARPA NEDERLAND B.V.
Nieuw Mathenesserstraat 69
3113 AE SCHIEDAM – The Netherlands
Tel. +31 (0)10 2857315
Fax +31 (0)10 2857331
E-mail: info@arpa-nl.com

Arpa Industriale

Since 1954, **Arpa** has been designing and manufacturing panels with very high quality HPL technology for the most diverse applications, from Architecture to Interior Design, from Health Care to Shipyards, from Transport to the Hospitality Industry and from Retail to Kitchens, with a very wide range of product options that are extremely varied in both structure and appearance, representing the creativity of “made in Italy” products; they are vibrant and original but also evidence of the greatest attention paid to the most varied demands of markets in a state of constant and rapid evolution.

More than 50 years of investment in research, advanced technology and staff training have enabled the company to gain a position of primary importance in international markets as well as a reputation for great reliability; it is an industry that is characterised by the expertise of its staff, the quality and variety of what it offers, its manufacturing flexibility and its range of services.

Arpa Industriale is a single member company under the direction and coordination of Broadview Holding BV.

Concept and graphic design: Imille

Art direction: Paolo Pascolo

Photo: Federico Villa, ERBI Archive

Print: Moglia (To)

Printed in Italy

FEBRUARY 2010

©Arpa Industriale S.p.A.

All rights reserved

DISCLAIMER:

General

These terms apply to the use of this document and such use automatically means that the other party agrees to these terms.

The information provided by Arpa Industriale S.p.A. ("Arpa") in this document is solely indicative. Arpa is unable to warrant the accuracy and completeness of this information. Arpa may change the information included in this document, including commercial names, trademarks, logos relating to any Arpa's product, at any time and without further notice. Arpa's customers and third parties must ascertain that they have the most recent document (for the most recent version, please contact Arpa – see contact details at page 20). No rights can be derived from the information provided; the use of the information is at the other party's risk and responsibility.

Arpa does not warrant that the information in this document is suitable for the purpose for which it is consulted by the other party. The document does not contain any design, structural calculation, estimate or other warranty or representation that customers and third parties may rely on. This document does not guarantee any properties of Arpa's products. Colours used in Arpa's communications (including but not limited to printed matter) and in samples of Arpa's products may differ from the colours of the Arpa's products to be supplied. Samples are not intended for use in product tests and are not representative of characteristics of the Arpa's products. Arpa's products and samples are produced within the specified colour tolerances and the colours (of production batches) may differ, even if the same colour is used. The viewing angle also influences the colour perception.

Customers and third parties must have a professional adviser inform them about (the suitability of) the Arpa's products for all desired applications and about applicable laws and regulations. Arpa does not warrant the above.

Arpa reserves the right to change (the specifications for) its products without prior notice.

Warning concerning the use of the Arpa's products

Pursuant to and for the purposes of the Council Directive 89/106/EEC, as further

amended, and to the relevant national legislation implementing said directive, any Arpa's product that does not bear any CE-marking shall not be deemed as being a "construction product", as defined by the aforementioned legislation.

Liability

To the maximum extent permitted under the applicable law, Arpa is not liable (neither contractual nor non-contractual) for any damage arising from or related to the use of this document, except if and to the extent that such damage is the result of intent or gross negligence on the part of Arpa and/or its management. The limitation of liability applies to all parties affiliated with Arpa, including but not limited to officers, directors, employees, affiliated enterprises, suppliers, distributors, agents, and representatives.

General conditions

All oral and written statements, offers, quotations, sales, supplies, deliveries and/or agreements and all related activities of Arpa are governed by the Arpa's General Terms and Conditions, copy of these general conditions of sale will be provided free of charge on request and for the customers' acceptance and signature before approval and execution of any purchase order by Arpa.

To the maximum extent permitted under the applicable law, all general terms and conditions other than the conditions mentioned above are explicitly dismissed and do not apply, regardless of whether such terms and conditions are referred to on requests for offers, offer confirmations, stationery and/or other documents of the other party.

Intellectual property

All intellectual property rights and other rights regarding the content of this document (including logos, text and photographs) are owned by Arpa and/or its licensors. Any use of the content of this document, including distribution, reproduction, disclosure, storage in an automated data file or the dispatch of such a file without Arpa's prior written consent is explicitly prohibited.

 is a registered trademark of Arpa.

Questions

Should you have any questions or comments, please do not hesitate to contact Arpa (see contact details at page 20).

Naturalia 
Recreating nature

Arpa Industriale S.p.A.
Via Piumati 91 - 12042 Bra (CN) Italy

arpaindustriale.com

Arpa 